



"Trust our families to protect your family"

RELAX

WE HAVE YOU COVERED

2020

Catalogue


Security Doors
& Screens


Alarms
& CCTV


Roller Shutters
& Window Film



All parts of this document are ©KNA Security Pty Ltd

INVISI-MAXX

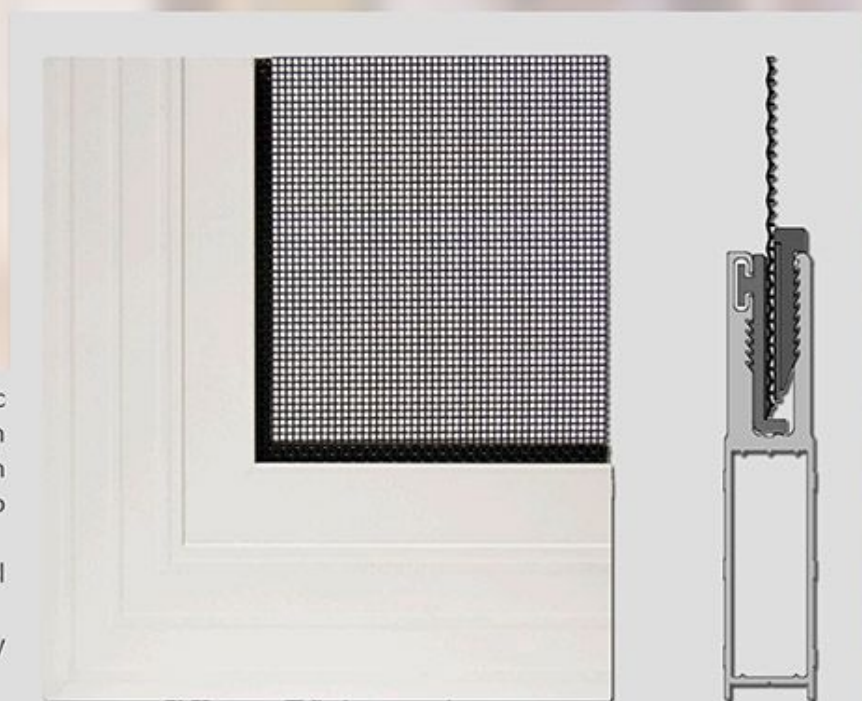
Applications: Very High Security - Commercial - Extra Large Doors & Screens - Great Visibility & Airflow



INVISI-MAXX SECURITY

15 year
warranty^^

- ✓ Triple locking as standard
- ✓ Heavy duty self closer^
- ✓ Bug strip^
- ✓ Double cylinder
- ✓ 2 x keys
- ✓ 316T Marine grade SS Mesh
- ✓ 6063 T5 aluminium frame
- ✓ Hinged doors
- ✓ Sliding doors
- ✓ Stacking doors
- ✓ Windows



INVISI-GARD MAXX Designed for Cyclonic regions requiring maximum protection from wind borne debris impacts, Invisi-Maxx can protect your premises in wind speeds up to 356km/h!!!!

Using high tensile powder-coated stainless steel made from .8mm up to 1.2mm wire.

Great for commercial projects, high security applications, large doors or cyclone areas.

The heavy duty frame along with the mesh retention system ensures that the entire screen system acts in concert to dissipate energy. The mesh retention system isolates dissimilar metals while also eliminating the need for screws or fasteners to retain the mesh. This means that the corrosion resistance of the system is not compromised.

Importance Level	Incidence	Wind Speed (m/sec)	Wind Speed (km/h)	Impact Speed (m/s)	Invisi-Maxx Mesh Size* (mm)	Pass
1	V200	72	259.2	31.7	0.8	✓
2	V500	80	288	35.2	0.8	✓
3	V1000	85	306	37.4	1.2	✓
4	V2000	90	324	39.6	1.2	✓
5	V10000	99	356.4	43.6	1.2	✓



PET-DOORS

SIZES

Small 240x190
Medium 305x225
Large 400x260

RATINGS

SECURITY ★★★★★★
AIRFLOW ★★★★★★
PRIVACY ★
VISIBILITY ★★★★★★

INVISI-GARD Product Testing

Mesh Knife Shear Test - AS5039-2008	✓	PASS
Dynamic Impact Test - AS5039-2008	✓	PASS
Lock and Hinge Lever test - AS5039-2008	✓	PASS
Fire Attenuation - AS1530.4-2005	✓	PASS
Swimming Pool Safety - AS1926-2007	✓	PASS
Neutral Salt Spray - AS2331.3.1-2006	✓	PASS
BAL40 - AS1530.8.1-2007	✓	PASS

INVISI-GARD

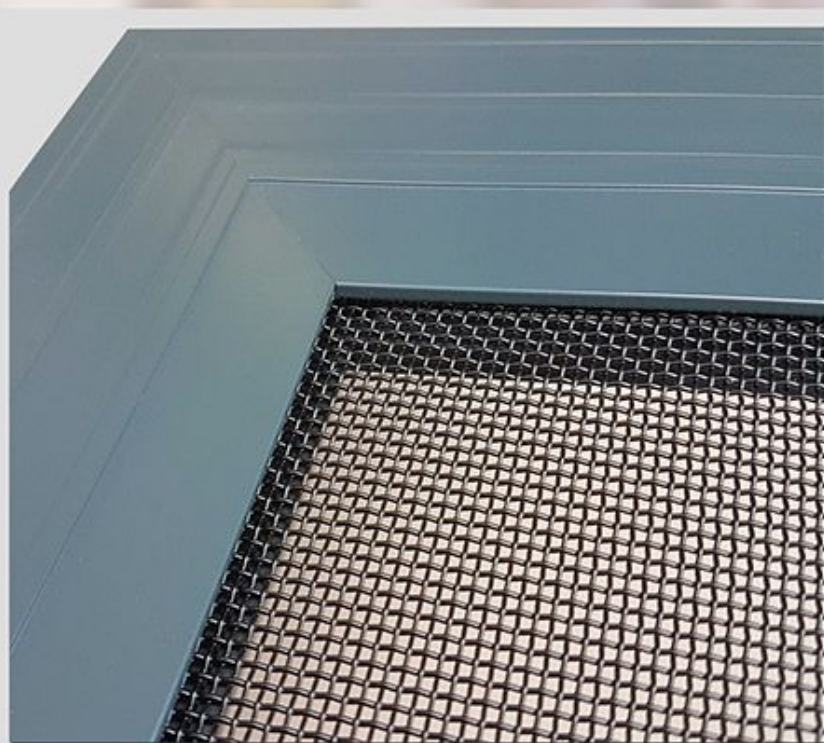
Applications: High security - Large Doors & Screens - Great Visibility & Airflow



INVISI-GARD SECURITY

15 year
warranty^^

- ✓ Triple locking as standard
- ✓ Heavy duty self closer^
- ✓ Bug strip^
- ✓ Double cylinder
- ✓ Solid aluminium corner stakes
- ✓ 316T Marine grade SS Mesh
- ✓ 6063 T5 aluminium frame
- ✓ Hinged doors
- ✓ Sliding doors
- ✓ Stacking doors
- ✓ Windows



INVISI-GARD The heavy duty steel system. Combining the strength of Marine Grade 316 Stainless Steel with the beauty, strength and flexibility of aluminium, INVISI-GARD Security Screens offer unparalleled clarity of vision with enhanced security.

It also boasts a larger mesh pocket than most other systems and the mesh is fully insulated from the aluminium for greater corrosion resistance.



PET-DOORS

SIZES

Small 240x190
Medium 305x225
Large 400x260

RATINGS

SECURITY ★★★★★
AIRFLOW ★★★★★
PRIVACY ★
VISIBILITY ★★★★★

INVISI-GARD Product Testing

Mesh Knife Shear Test - AS5039-2008	✓ PASS
Dynamic Impact Test - AS5039-2008	✓ PASS
Lock and Hinge Lever test - AS5039-2008	✓ PASS
Fire Attenuation - AS1530.4-2005	✓ PASS
Swimming Pool Safety - AS1926-2007	✓ PASS
Neutral Salt Spray - AS2331.3.1-2006	✓ PASS
BAL40 - AS1530.8.1-2007	✓ PASS

INVISI-LITE

Applications: Security - Doors & Screens - Great Visibility & Airflow



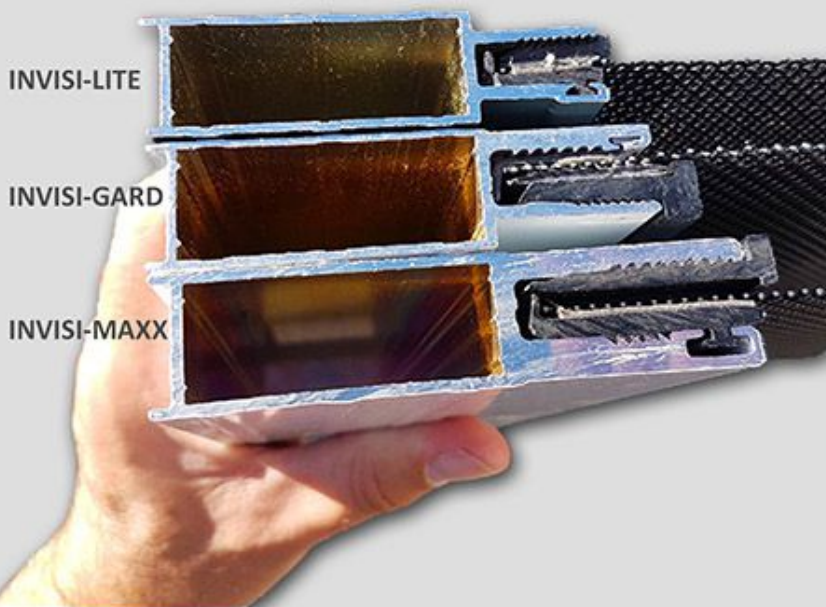
INVISI-LITE SECURITY

7 year warranty^^

- ✓ Triple locking as standard
- ✓ Heavy duty self closer^
- ✓ Bug strip^
- ✓ Double cylinder
- ✓ Solid aluminium corner stakes
- ✓ 316T Marine grade SS Mesh
- ✓ 6063 T5 aluminium frame
- ✓ Hinged doors
- ✓ Sliding doors
- ✓ Stacking doors
- ✓ Windows



FRAME SIZE COMPARISON



INVISI-LITE Using the same high quality mesh used in the Invisi-Gard system, Invisi-Lite passes the same residential security standards while being a little more cost effective due to using a lighter frame. It also utilises the similar EGP style system to hold the mesh into the frame so it is perfect for WA.

While most companies have one steel system which is usually a basic system to pass the standards, KNA have three systems!



PET-DOORS

SIZES

Small 240x190
Medium 305x225
Large 400x260

RATINGS

SECURITY ★★★★★
AIRFLOW ★★★★★
PRIVACY ★
VISIBILITY ★★★★★

INVISI-GARD Product Testing

Mesh Knife Shear Test - AS5039-2008	✓ PASS
Dynamic Impact Test - AS5039-2008	✓ PASS
Lock and Hinge Lever test - AS5039-2008	✓ PASS
Fire Attenuation - AS1530.4-2005	✓ PASS
Swimming Pool Safety - AS1926-2007	✓ PASS
Neutral Salt Spray - AS2331.3.1-2006	✓ PASS
BAL40 - AS1530.8.1-2007	✓ PASS

ALU-GARD EDGE 2.0

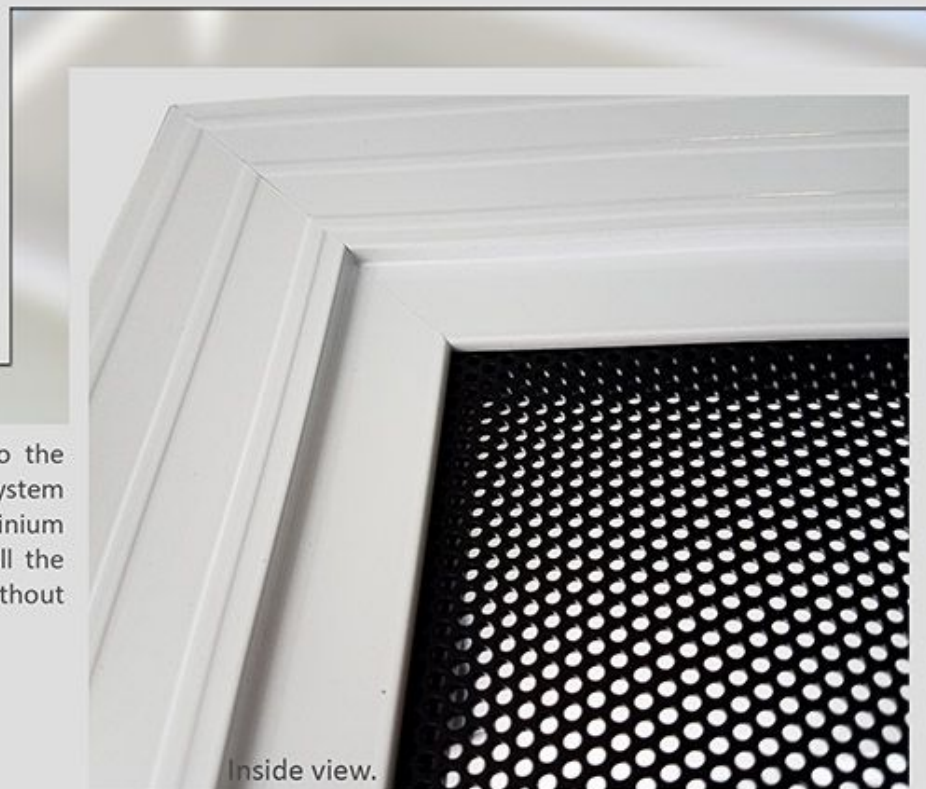
Applications: Security - Large Doors & Screens - Moderate Visibility & Airflow - Medium Daytime Privacy



ALU-GARD EDGE SECURITY

7year
warranty^^

- ✓ Triple locking as standard
- ✓ Heavy duty self closer^
- ✓ Bug strip^
- ✓ Double cylinder
- ✓ Solid aluminium corner stakes
- ✓ Perforated aluminium mesh
- ✓ 6063 T5 aluminium frame
- ✓ Hinged doors
- ✓ Sliding doors
- ✓ Stacking doors
- ✓ Windows



ALU-GARD EDGE is the latest addition to the range, EDGE is a PVC pressure retention system that retains the ALU-GARD perforated aluminium sheet in an extruded aluminium frame. All the benefits of Alu-Gard but in a new frame without the rivets!



PET-DOORS

SIZES

Small 240x190
Medium 305x225
Large 400x260

RATINGS

SECURITY ★★★★★
AIRFLOW ★★★★★
PRIVACY ★★★★★
VISIBILITY ★★★★★

ALU-GARD Product Testing

Mesh Knife Shear Test - AS5039-2008	✓	PASS
Dynamic Impact Test - AS5039-2008	✓	PASS
Lock and Hinge Lever test - AS5039-2008	✓	PASS
BAL-29 Compliant	✓	PASS
Aluminium sheet	1.6mm	2mm aperture
Material	Aluminium	
Aluminium Frame	6063-T5 Grade Aluminium	

^Hinged doors

ALU-GARD 2.0

Applications: Security - Doors & Screens - Moderate Visibility & Airflow - Medium Daytime Privacy



ALU-GARD SECURITY

7year
warranty^^

- ✓ Triple locking as standard
- ✓ Heavy duty self closer^
- ✓ Bug strip^
- ✓ Double cylinder
- ✓ Solid aluminium corner stakes
- ✓ Perforated aluminium mesh
- ✓ 6063 T5 aluminium frame
- ✓ Hinged doors
- ✓ Sliding doors
- ✓ Stacking doors
- ✓ Windows



ALU-GARD is the all-aluminium security screening solution for Australian conditions. Not only does it provide security, clarity of vision and strength, it is also corrosion resistant and looks great. Resistant to knife attack, impact attack and Jemmy attack as tested in the AS5039.



PET-DOORS

SIZES

Small 240x190
Medium 305x225
Large 400x260

RATINGS

SECURITY ★★★★★
AIRFLOW ★★★★★
PRIVACY ★★★★★
VISIBILITY ★★★★★

ALU-GARD Product Testing

Mesh Knife Shear Test - AS5039-2008	✓	PASS
Dynamic Impact Test - AS5039-2008	✓	PASS
Lock and Hinge Lever test - AS5039-2008	✓	PASS
BAL-29 Compliant	✓	PASS
Aluminium sheet	1.6mm	2mm aperture
Material	Aluminium	
Aluminium Frame	6063-T5 Grade Aluminium	

^^Hinged doors

OUTLOOK RV

Applications: Security - Low Visibility & Airflow - High Daytime Privacy



OUTLOOK RV SECURITY

7year
warranty^^

- ✓ Triple locking as standard
 - ✓ Heavy duty self closer^
 - ✓ Bug strip^
 - ✓ Double cylinder
 - ✓ Solid corner stakes
 - ✓ Aluminium mesh
 - ✓ 6063 T5 aluminium frame
- ✓ Hinged doors



Privacy doors in the past required a Grille with Privacy mesh behind them. We now have **OUTLOOK RV MESH**, this is an expanded aluminium mesh that is manufactured to provide Security, Privacy and Visibility from inside out! Now you can have your front door open securely and privately.



PET-DOORS

SIZES

Small 240x190
Medium 305x225
Large 400x260

RATINGS

SECURITY ★★★★★
AIRFLOW ★
PRIVACY ★★★★★
VISIBILITY ★★★

OUT-LOOK Product Testing

Mesh Knife Shear Test - AS5039-2008	✓ PASS
Dynamic Impact Test - AS5039-2008	✓ PASS
Lock and Hinge Lever test - AS5039-2008	✓ PASS

Aluminium sheet
Material
Aluminium Frame

Expanded aluminium
Aluminium
6063-T5 Grade Aluminium

^^Hinged doors

CLASSIC GRILLE

Applications: Security - Large Doors & Screens - Good Visibility & Airflow - High Daytime Privacy
(with Privacy Mesh)

7year
warranty^^

GRILLE SECURITY

- ✓ Triple locking optional
- ✓ Heavy duty self closer^
- ✓ Bug strip^
- ✓ Double cylinder
- ✓ Solid aluminium corners
- ✓ 7mm Grille
- ✓ 6063 T5 aluminium frame
- ✓ Hinged doors
- ✓ Sliding doors
- ✓ Stacking doors
- ✓ Windows



The **CLASSIC GRILLE** has secured homes for many years and will improve the security of your home. Perfectly suited to a wide range of window applications as well as both hinged and sliding doors. **CLASSIC GRILLE** has a 7mm strand thickness and has been tested to meet the requirements of the Australian Security Door Standard AS5039.



PET-DOORS

SIZES

Small 240x190
Medium 305x225
Large 400x260

RATINGS

SECURITY ★★★★★
AIRFLOW ★★★★★
PRIVACY ★★★★★ w/privacy mesh
VISIBILITY ★★★★★

CLASSIC GRILLE Product Testing

Pull Test Test - AS5039-2008 ✓ PASS
Dynamic Impact Test - AS5039-2008 ✓ PASS
Lock and Hinge Lever test - AS5039-2008 ✓ PASS

Aluminium grille 7mm
Material Aluminium
Aluminium Frame 6063-T5 Grade Aluminium

^Hinged doors

WINDOW SCREENS

Keep your windows open securely.

We can install any of our security products to windows, these replace the fly-wire and create a security barrier allowing you to leave windows open securely at night.

- ✓ Invisi-Lite
- ✓ Invisi-Gard
- ✓ Invisi-Maxx
- ✓ Alu-Gard
- ✓ Alu-Gard Edge
- ✓ Outlook RV
- ✓ Grille
- ✓ Invisi-Scape



INVISI-SCAPE

EMERGENCY FIRE ESCAPE SECURITY SCREENS

The new quick and easy “Press to Release” mechanism allows you to get out quickly in the event of an emergency. Simply press the lever to unlock and push open the screen in one smooth and easy motion. The handle now releases the screen after only 20° of movement, aiding in a speedy escape when required.



LOCKING SYSTEMS

The locking system, the heart of the security door.

All too often the focus is on the mesh only when the lock is usually the most vulnerable part of the security door. The lock has to allow ease of opening for the owner whilst still being secure. KNA choose to use locks manufactured by ASSA ABLOY, the parent company behind brands such as Lockwood, Whitco, Yale and countless others. ASSA ABLOY is the largest lock company in the world, manufacturing locks used in Prisons, Military, Commercial and Residential applications.

Hinged door - Lockwood 8654



Features

- ✓ 3 Point locking
- ✓ Double 'pin' cylinder
- ✓ Dual select
- ✓ Keyless snib inside
- ✓ Stainless steel hook-bolt
- ✓ S6 High Security AS4145.2
- ✓ D7 High Durability AS4145.2
- ✓ Testing AS5041

Sliding door - Whitco Leichhardt



Features

- ✓ 3 Point locking
- ✓ Double 'pin' cylinder
- ✓ Ergonomic design
- ✓ Keyless snib inside
- ✓ Operate only when closed
- ✓ Self latching
- ✓ Parrot beak deadlock
- ✓ Testing AS5041

COLOURS

STANDARD COLOURS



Pearl White



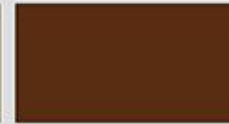
White Lustre



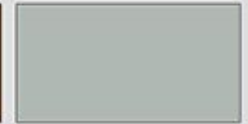
Magnolia



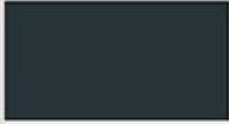
Doeskin



Brown



Anodic Natural



Anotec Dark Grey



Black



Charcoal Lustre

COMMON SPECIAL COLOURS (Many more available)



White Birch



Surfmist



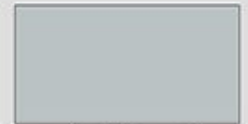
Evening Haze



Dune



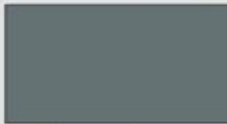
Shale Grey



Anodic Silver Grey



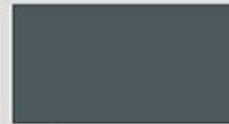
Windspray



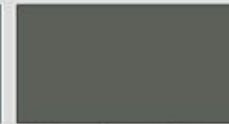
Notre Dame



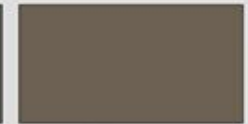
Storm Front



Ironstone



Woodland Grey



Jasper



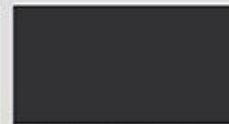
Anodic Bronze



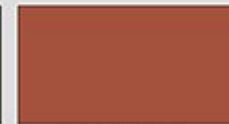
Wizard



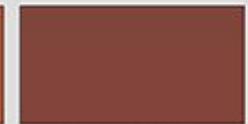
Deep Ocean



Monument



Headland



Manor Red

WOOD LOOK (More available)



W/Red Cedar



Chestnut



Light Oak



Teak

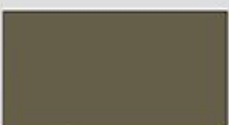


Stained Pine

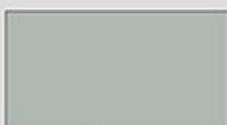


Rose Mahogany

ANODISED COLOURS



Bronze



Clear

CHOOSING THE RIGHT SCREEN

Not sure what door or screen is right for you?

We understand that choosing the right product can be daunting with so many options. It is important that you get the right product for the goal you are trying to achieve. These goals can range from airflow to security or privacy to pet proofing.

We created this page to try and help simplify the process of choosing the correct product.

Note: All these products pass the Australian Security Standards AS5039, the security rating of '3' is what we use as the baseline for the standards.

GRILLE	<div><div>SECURITY</div><div></div>3</div> <div><div>LIGHT/AIR</div><div></div>4</div> <div><div>PRIVACY</div><div>1 (with standard flywire)5 (with privacy mesh)</div></div> <div><div>COST</div><div></div>1</div>
OUTLOOK	<div><div>SECURITY</div><div></div>4</div> <div><div>LIGHT/AIR</div><div></div>1</div> <div><div>PRIVACY</div><div></div>5</div> <div><div>COST</div><div></div>3</div>
ALUGARD	<div><div>SECURITY</div><div></div>4</div> <div><div>LIGHT/AIR</div><div></div>3</div> <div><div>PRIVACY</div><div></div>3</div> <div><div>COST</div><div></div>3</div>
ALUGARD EDGE	<div><div>SECURITY</div><div></div>4</div> <div><div>LIGHT/AIR</div><div></div>3</div> <div><div>PRIVACY</div><div></div>3</div> <div><div>COST</div><div></div>3</div>
INVISILITE	<div><div>SECURITY</div><div></div>4</div> <div><div>LIGHT/AIR</div><div></div>5</div> <div><div>PRIVACY</div><div></div>1</div> <div><div>COST</div><div></div>4</div>
INVISIGARD	<div><div>SECURITY</div><div></div>5</div> <div><div>LIGHT/AIR</div><div></div>5</div> <div><div>PRIVACY</div><div></div>1</div> <div><div>COST</div><div></div>5</div>
INVISIMAXX	<div><div>SECURITY</div><div></div>6</div> <div><div>LIGHT/AIR</div><div></div>5</div> <div><div>PRIVACY</div><div></div>1</div> <div><div>COST</div><div></div>6</div>

Rated Security.

Security products in WA are regulated and a true security door or screen must pass certain standards. Below is an overall of the testing required.



Dynamic Impact Test: AS5039-2008 **PASS**

This Australian Standard test simulates a kick to a security screen door.

This test was introduced after it was found that grilles fitted to security screen doors were subject to impact breakage through kicking of the grille panel. The test is performed with a sand and lead filled bag and weighing around 40kg. At impact the bag imparts 100 joules of energy to the panel being tested. The test is repeated 5 times, simulating repeated kicking as the burglar attempts to break into your home.

The test panel fails the test if the infill material (mesh) comes out of the door or window framing, or if the impact breaches the material in any way. The Australian Standard AS5041 requires security screens and doors to resist five consecutive impacts, each of 100 Joules.

Invisi-Gard easily meets this requirement and can resist in excess of 50 consecutive impacts, each of 100 Joules without failure. Invisi-Maxx would far exceed even this.



Lock and Hinge Lever Test: AS5039-2008 **PASS**

The effects of a jemmy attack against a security screen door or window grille are simulated by allowing a standardised narrow-bladed lever (representing a large screw driver) to be inserted against the locking, fastening and hinging points and a turning force (torque) is applied to those points via the lever.

If all the hinges, and/or all the locking and/or all the fastening points tested have failed, then the security screen door or window grille shall have failed. No part of the edge of the security screen door or window grille shall have deflected to the extent that the gap between the security screen door or window grille and the door or window frame is greater than 15cm, perpendicular to the door or window frame after the jemmy test has been completed.



Knife Shear Test: AS5039-2008 **PASS**

Knife Shear Test This Australian Standard test simulates a knife attack on the mesh as a burglar tries to cut through the screen. The test aims to recreate the effect of someone attacking your doors with a Stanley knife or similar.

During this test, a specially designed machine draws a knife blade along a line down a panel three times. After each draw, the used blade is replaced with a new one. The sample fails if a continuous cut of 15cm or greater is achieved after the third draw. Invisi mesh passes this test in both the warp and fill directions, unlike many imported meshes which only pass in one direction.



Other tests include the Salt Spray Test, Cyclone Testing, Fire Attenuation and Bush Fire Testing.



KNA Security for the last few years have also done their own testing that surpass that required by the standards. This has included kicking, baseball bats, jarrah 4x2's, sledge hammers and axes.

KNA use the standards that are required as a starting point not the benchmark.

Videos of some of these tests can be found on our website.

www.knasecurity.com.au

Don't replace, repair!

We are experts in repairing screen doors and getting glass doors sliding like new again. You can save 100's of dollars letting us repair rather than replace. Ask your consultant when quoting if your old door can be repaired.

Glass door repairs

Don't struggle with your glass sliding doors any longer. We can get them rolling like new again! We stock rollers for all major brands including Jasons, Affinity, BGC, Dowell, Stegbar, Armani, Comalco, Precision and many more.

DIY

A bit handy yourself? come in and get what you need along with free advice.



Screen door repairs

Have a screen door that needs some TLC or upgrades? We can replace fly-wire, pet-mesh, privacy mesh, locks, rollers, hinges and more.

- ✓ Lock replacements
- ✓ Fly-screen repairs
- ✓ Pet doors
- ✓ Self closers
- ✓ Servicing
- ✓ Parts



ROLLER SHUTTERS



ROLLER SHUTTERS

- ✓ Increase Security
- ✓ Control Light
- ✓ Keep Heat In Or Out
- ✓ Reduce Energy Consumption
- ✓ Made in WA
- ✓ Electric, Manual or Remote
- ✓ Large Range of Standard Colours

10year
warranty^{^^}



WINDOW TINT

Lifetime
warranty^{^^}

WINDOW TINTING

- ✓ Up to 83% heat rejection
- ✓ 99% UV light rejected
- ✓ Reduce energy consumption
- ✓ Insulates and strengthens glass
- ✓ Privacy
- ✓ Glare reduction
- ✓ Dramatically reduces fading of furniture



If you want QUALITY and the LATEST technologies in home window tinting and security film at a great price then give us a call. Our products will perform, give the best heat reduction, privacy, glare reduction and reflection. We do not use cheaper metal based films and will only use Commercial grade protective film, the highest quality Carbon tinting and Ceramic tinting products.

DARK FILM - PRIVACY FILM - MIRROR FILM - FROST FILM



ALARMS

For total peace of mind when you are not home.

ESSENTIAL ALARM PACKAGE



3year
warranty^^

Upgrade
to Pet Sensors
only \$99

- ✓ 3 x High Quality Sensors (PIR)
- ✓ Hills R8 control alarm panel
- ✓ LED keypad (Voice Nav Lite)

- ✓ Metal Enclosure
- ✓ Anti Tamper Switch
- ✓ H'Duty 7amp Backup Battery

- ✓ External Siren & Strobe
- ✓ Internal Siren

FAMILY ALARM PACKAGE



3year
warranty^^

- ✓ 5 x High Quality Sensors (PIR)
- ✓ Hills R8 control alarm panel
- ✓ LED keypad (Voice Nav Lite)

- ✓ Metal Enclosure
- ✓ Anti Tamper Switch
- ✓ H'Duty 7amp Backup Battery

- ✓ External Siren & Strobe
- ✓ Internal Siren
- ✓ Comnav for smart phone



PERIMETER ALARM PACKAGE



3year
warranty^^

- ✓ 5 x PIRs, 2xVibration, 2xReed Sensors
- ✓ Hills R128 control alarm panel
- ✓ LCD keypad (Touch Nav)

- ✓ Metal Enclosure
- ✓ Anti Tamper Switch
- ✓ H'Duty 7amp Backup Battery

- ✓ External Siren & Strobe
- ✓ Internal Siren
- ✓ Comnav for smart phone



**Protect
Your Home**
When you are not home.



CCTV

This is not what you will find in an electronic store. This is better!

4MP IP SYSTEM

HiLook
by **HIKVISION**



3year
warranty^{^^}

IP67
Weather
Protection
POE
Power over
Ethernet

- ✓ GENUINE HiLook by Hikvision
- ✓ 4mp high performance CMOS
- ✓ 2.8mm lens

- ✓ True Day/Night
- ✓ OSD menu, DNR, Smart IR
- ✓ True WDR

- ✓ 1/3" CMOS
- ✓ Up to 30m IR distance
- ✓ 1-16 cameras, up to 6tb

6MP IP SYSTEM

HIKVISION



3year
warranty^{^^}

IP67
Weather
Protection
POE
Power over
Ethernet

- ✓ GENUINE branded Hikvision
- ✓ 6mp high performance CMOS
- ✓ Dual video streams

- ✓ True Day/Night
- ✓ Supports H.265+/H.265
- ✓ True WDR

- ✓ Back light compensation
- ✓ Up to 30m IR distance
- ✓ 1-16 cameras, up to 6tb

8MP IP SYSTEM

HIKVISION
4K



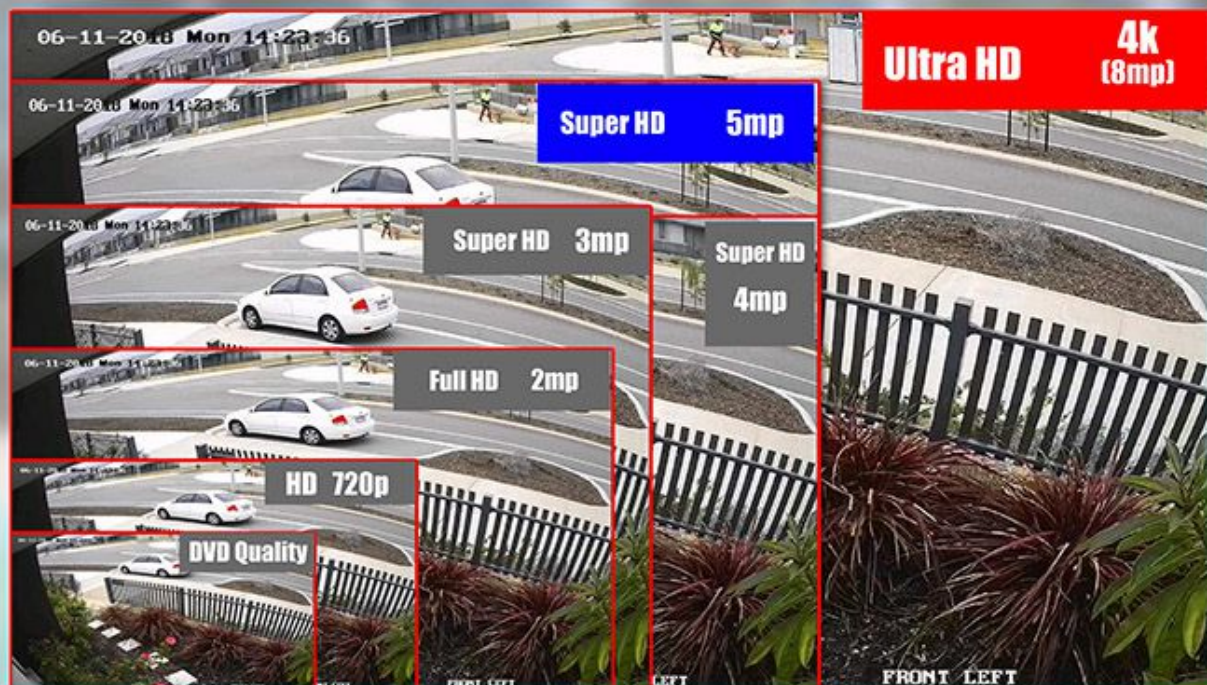
3year
warranty^{^^}

IP67
Weather
Protection
POE
Power over
Ethernet

- ✓ GENUINE branded Hikvision
- ✓ 8mp 4K high performance CMOS
- ✓ Dual video streams

- ✓ True Day/Night
- ✓ Supports H.265+/H.265
- ✓ True WDR

- ✓ Back light compensation
- ✓ Up to 30m IR distance
- ✓ 1-16 cameras, up to 6tb



Why choose KNA?

No Interest Ever!* Payment plans...

HOW DOES NO INTEREST EVER!* REALLY WORK?

One of the great benefits of your payment plan is that you never pay interest on the amount you owe. There are small fees to set up and run your account and to process your repayments. These fees are included in your credit and payment schedules. So you know exactly how much you are being charged and, providing you stick to your payment plan, you know exactly how many payments you need to make. So there really is no interest. Ever!*



Take it today.
Take time to pay.

Ask our clients...

“Thank you KNA security for your fantastic service. Great communication throughout the whole process which is something I look for in a business. Installer was friendly and professional. Will be recommending you to anyone that asks! Thank you again”

Cheryl Sorensen ★★★★★

“Friendly, excellent service from KNA Security. Our new front door and double sliding security doors with pet flaps work like a dream and have experienced no issues with their operation. To top it off, competitively priced and prompt communication. More than happy to recommend their team thanks again.”

Jasmine Langley ★★★★★

“Just had our security door installed by KNA security, From start to finish from Rep to receptionist and Trevor who Install the door, nothing but the best service. Great communication great prices and a really friendly team. Highly recommend.”

Leanne Wilson ★★★★★

“Just had double security screens fitted to our front door and to say I am over the moon is an understatement

“nothing was a bother” quoted and fitted with in 3 weeks. Customer Service is 10/10
Thanks to all at KNA Security.”

Michelle Shield ★★★★★

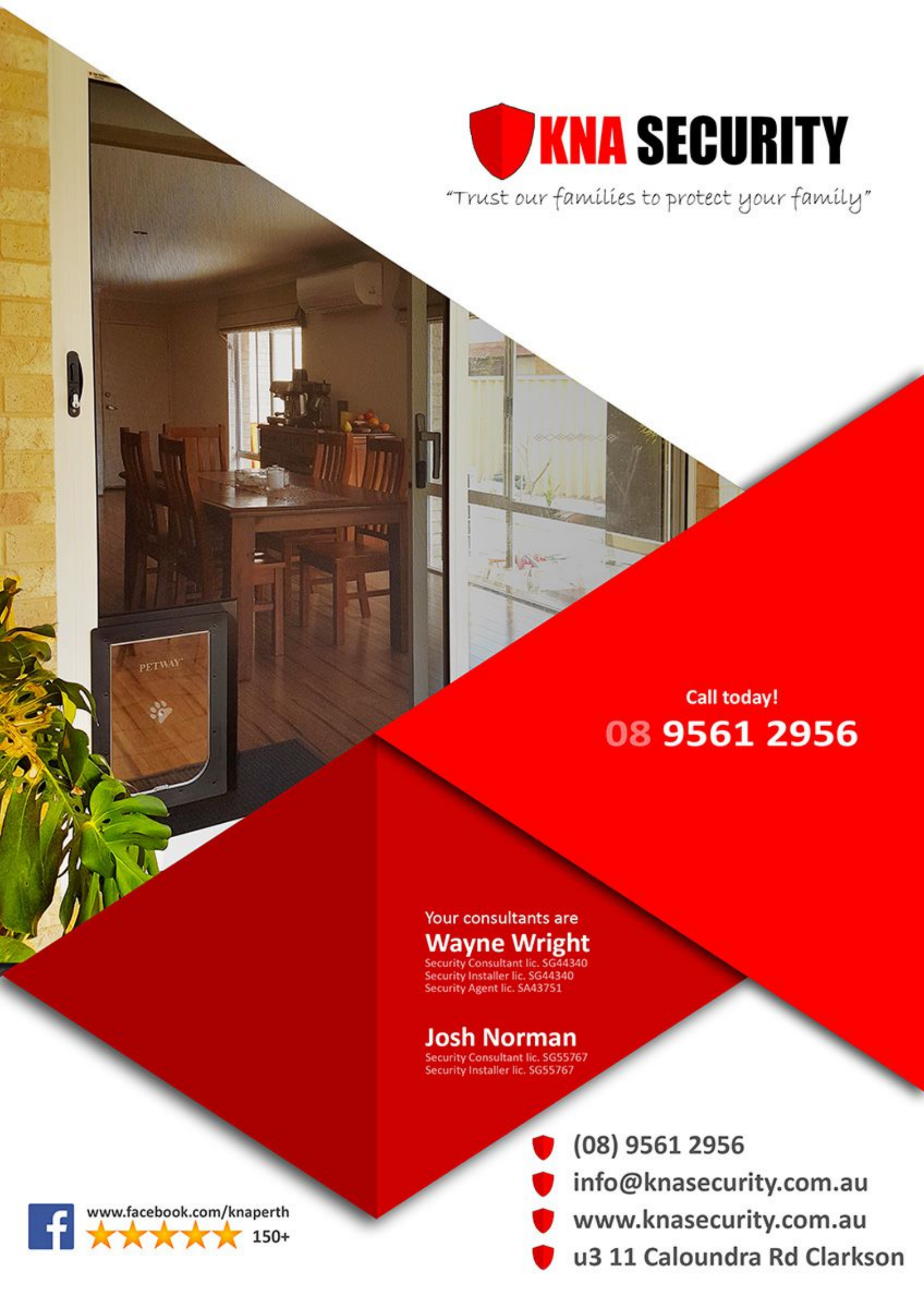
“Thank you so much to Wayne! We got three security doors installed as well as a security screen on our front window a few years ago. Which we received exceptional service right from the first quote and have been so happy with them all. Today I had a problem with a roller on one of my security doors caused by me, but Wayne came out and repaired it anyways I was so very thankful what an amazing company and fantastic service! Cannot recommend KNA highly enough!!!”

Anikka Cain ★★★★★





"Trust our families to protect your family"



Call today!

08 9561 2956

Your consultants are
Wayne Wright

Security Consultant lic. SG44340
Security Installer lic. SG44340
Security Agent lic. SA43751

Josh Norman

Security Consultant lic. SG55767
Security Installer lic. SG55767



www.facebook.com/knaperth



150+



(08) 9561 2956



info@knasecurity.com.au



www.knasecurity.com.au



u3 11 Caloundra Rd Clarkson